

TECHNICAL DATASHEET



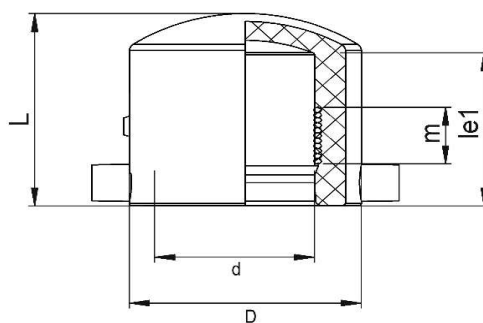
EF END CAP

00 Update - 03/2025

TECHNICAL DATA

| | |
|-----------------------|-------------------|
| Article No | 001 117 2140 0050 |
| d (mm) | 50 |
| D (mm) | 66 |
| L (mm) | 74 |
| le1 (mm) | 61 |
| m (mm) | 28 |
| Weight (Kg) | 0,116 |
| Box Quantity (pcs) | 55 |
| Box Dimension (cm) | 35,5x35,5x27,5 |

INJECTION MOULDED



IDENTIFICATION OF PRODUCT

| | |
|----------------|--|
| D(mm) | 50 |
| SDR | 11 |
| RAW MATERIAL | PE 100 |
| PRESSURE CLASS | 16 Bar Water 10 Bar Gas |
| TRADEMARK | NTG |
| EXECUTION | Injection Moulded |
| STANDARD | EN 12201-3 EN 1555-3 AS / NZS 4129 |
| SPECIFICATION | Suitable for SDR9...11 pipe 4 mm pin connectors |

EF SPECIFICATION

| | |
|-----------------|---------------|
| WELDING VOLTAGE | 40V |
| RESISTANCE | 6,78 Ω |
| WELDING TIME | 80 Sec. |
| COOLING TIME | 15 Min. |
| WINDING TYPE | Monofilar |
| WELDING BARCODE | |



961420320503406785080117

Tolerance on diameters and thickness according to the standards. The other dimensions are specialized. Tolerance $\pm 5\%$. NTG PLASTIK reserves all the right to change any information without giving prior notice. The production, distribution and utilization of this document without explicit authorization is prohibited.

Fr 161 Rev 00